



# BETHEL CHURCH

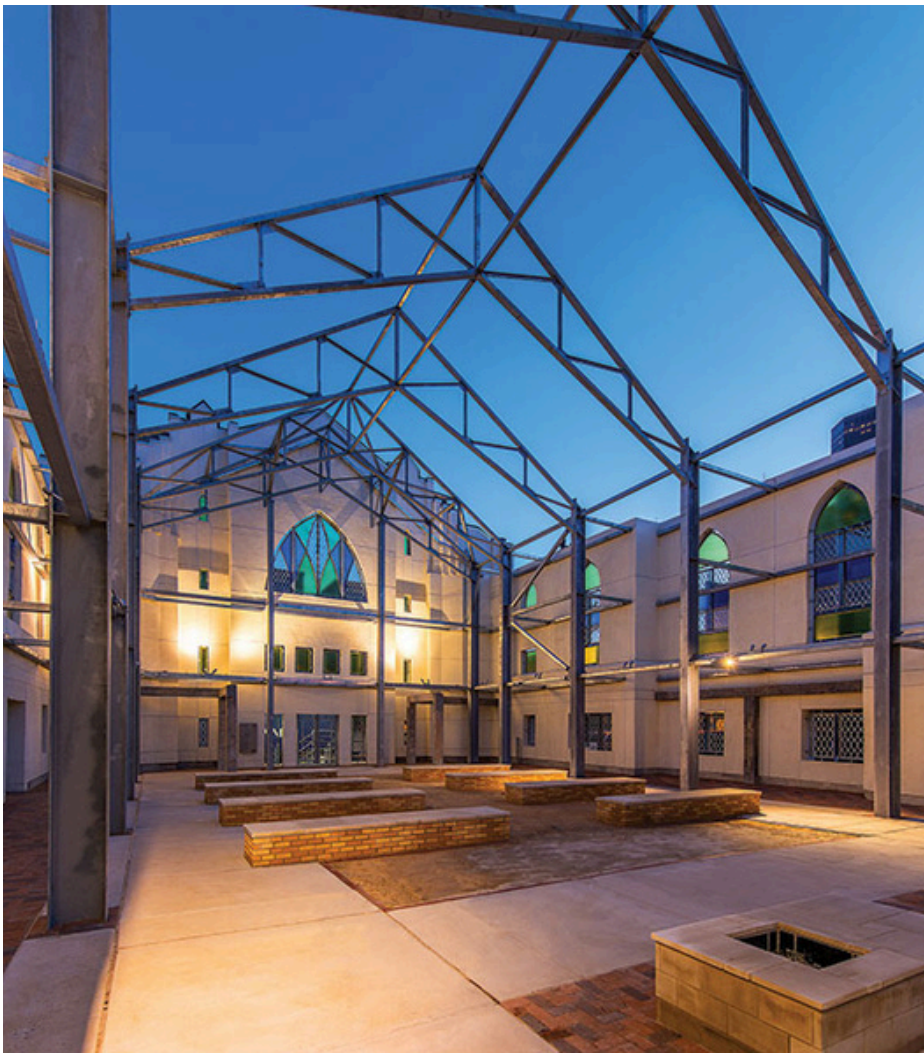
HOUSTON, TEXAS

Bethel Missionary Baptist Church was founded in the late nineteenth century in a post-Civil War Houston neighborhood established by formerly enslaved people. After the first church buildings were destroyed, a single-floor structure was erected in 1923. In 2005, a fire left only the exterior masonry walls in place. The facility was abandoned until 2009, when the city purchased the property to convert it into a community park. The existing walls had to be strengthened to withstand hurricane wind speeds required by the city's building code. United restored the heavily damaged, unreinforced masonry walls by completing brick crack repairs, brick replacement and rebuild, installing retro-fit masonry anchors, and installing engineered reinforcement into existing masonry walls. Additionally, United cleaned the structures exterior and applied an elastomeric coating to the new stucco façade.



## SERVICES PROVIDED


- Historic Restoration
- Masonry Restoration



## PROJECT INFO

- Duration 10 Months
- Completed July 2013
- Contract \$ 504,998
- Client City of Houston
- Designer PGAL Architects  
Walter P Moore
- ENR Restoration Award of Merit
- Good Brick Award  
Excellence in Historic Preservation

## CONTACT UNITED

 (770) 460-9606

 [info@urpinc.com](mailto:info@urpinc.com)

 [www.urpinc.com](http://www.urpinc.com)



  
**UNITED**  
RESTORATION+  
PRESERVATION